



SYNKRON
INTERNATIONAL

COMPANY PROFILE 2025

A black and white photograph of three industrial workers. They are wearing hard hats and safety glasses. The worker on the left is looking down at a set of blueprints held by the worker in the middle. The worker on the right is pointing upwards with his right hand. The background is a blurred industrial setting with smokestacks and pipes.

Who are We

SMOOTH SYNTHESIS

Who are we

Our company's team of engineers is drawn from various equipment manufacturing powerhouses, namely KHS and Buhler, to name but a few. We have extensive training and fieldwork experience, forming a formidable team when tasked with design or general service works. With a core team of graduate engineers from the mechatronics, mechanical, and electrical engineering fields, our expertise in design through CAD software ensures holistic, efficient, and accurate design solutions. Our team of service engineers has specialized knowledge of most of the packaging equipment used in the bottling industry.

Our Mission

We will increasingly provide superior service delivery to our clients by ensuring timely and cost-effective provision of expert technical support services. We will develop mutually beneficial relationships with our customers, suppliers, and employees and enhance our position as a leader in technical service provision for design, mechanical, electrical, and automation works for the consumable goods manufacturing industry.

Our Capabilities

Synkron International has proven capabilities in the field of design and fabrication. We have developed custom solutions for our clients from inception, prototyping to manufacturing.

With great emphasis placed on cost efficiency, value addition and customer satisfaction, our approaches apply lean principals at all stages. This ensures that our clients meet their financial and operational constraints. Our automation team possess extensive experience working with a wide spectrum of software and hardware.



OUR SERVICES

Our Services

Synkron International is a firm of Mechanical and Electrical Engineering Consultants with a human resource base of professionals qualified and experienced in project design, co-ordination and management.

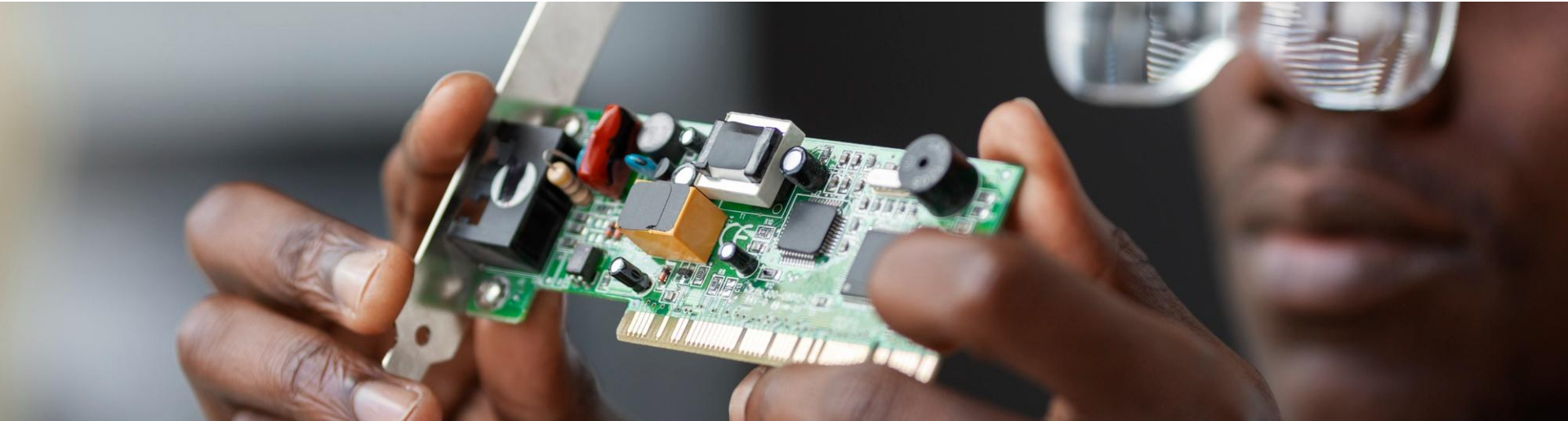
The firm practices in Kenya and with international links. Our fields of specialization are as follows:

- Building electrical and mechanical services
- Plant design and facilities layout
- Machine design
- Materials development

The firm specializes in pre-investment studies, design, contract administration and project management.

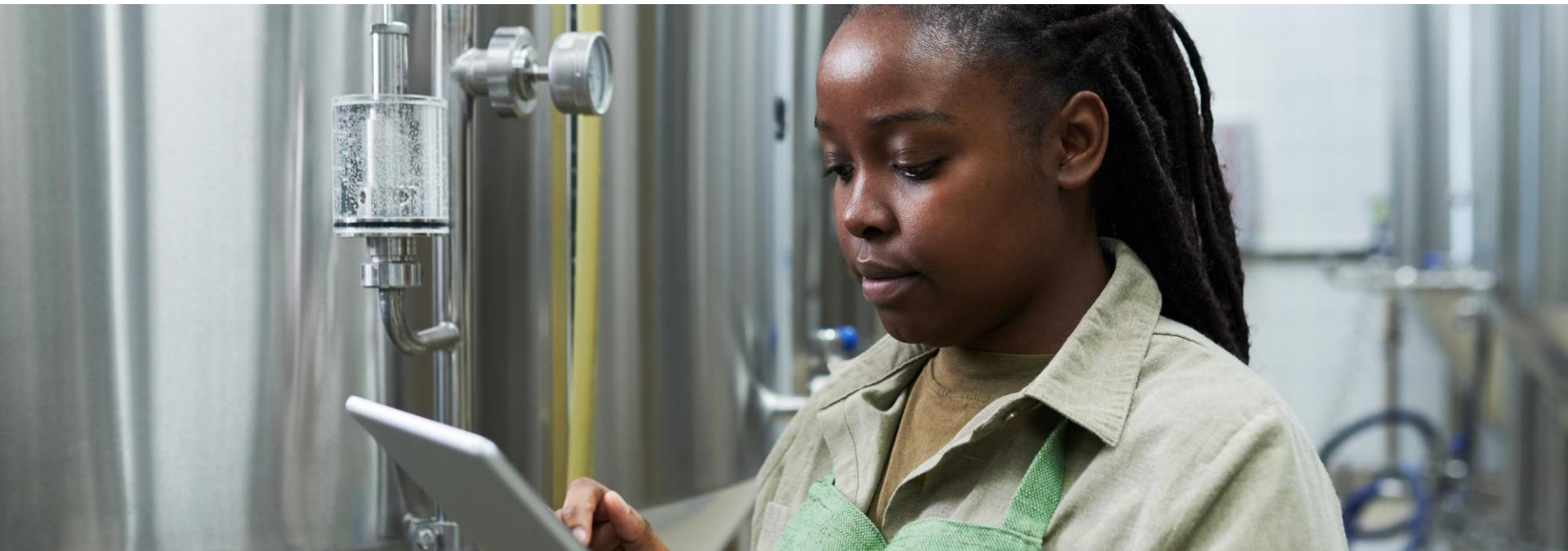
Our client portfolio includes private sector investors, government ministries and international agencies.

Electrical Support



At Synkron International, we have provided support to numerous industries with a wide range of electrical needs. From installation, to service and commissioning of entire plants, you will find that we are uniquely placed to provide you with the service that you require anywhere in Africa.

Plant Audits



With our extensive experience in industrial set ups, we engage our clients in sustainability works to increase the life of their factories. Through extensive audits that usually start the lifecycle management process of any industrial unit, we are able to provide our clients with key bench marking data for effective maintenance and management.

Industrial Automation



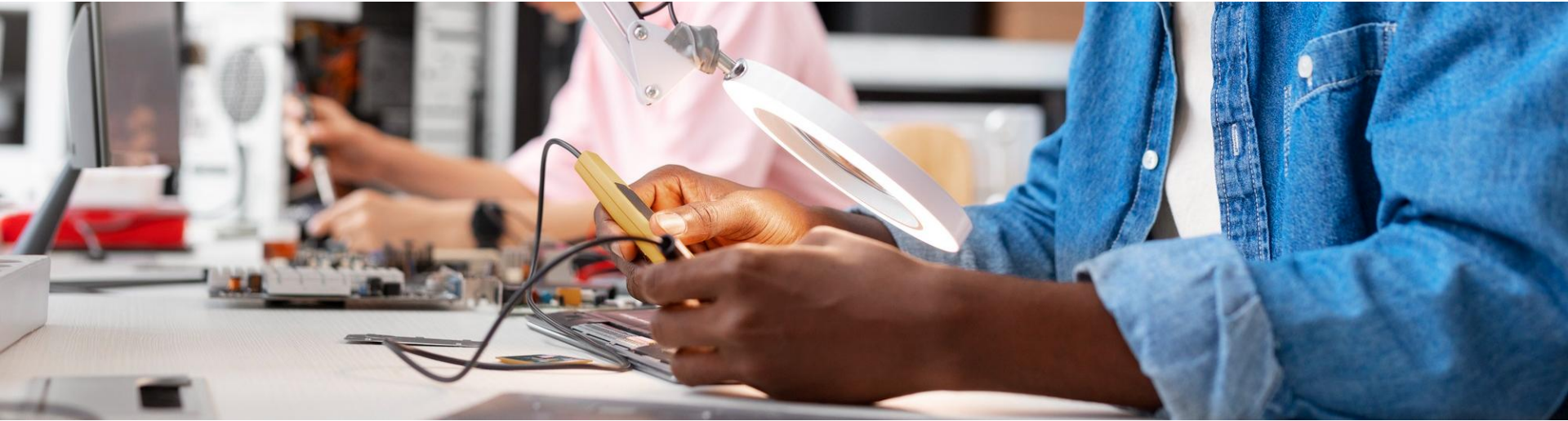
With a cumulative experience of more than 40 years, we have a versatile and well-versed automation team capable of programming in more than 10 machine languages and executing multidisciplinary 3 projects and integrations.

Mechanical Support



Our Mechanical division at Synkron is second to none. We have a wide range of mechanical specialists supporting a large range of OEM equipment. We are capable in the field of installation, service and commissioning for any range of equipment that you might require.

Training Programs



As a student seeking to make yourself more marketable or as an industry seeking to upskill your team, Synkron International provides you with a unique avenue to grow your skills. We have a wide range of training tools and modules available for our training sessions normally ranging from the beginner level for students, to the more advanced levels for the seasoned industrial practitioner.



Our Statistics

SMOOTH SYNTHESIS

Statistical Outcomes

30+

Countries Served

80+

Satisfied Customers

500+

Completed jobs

10,000+

Parts Sold

30+ Countries Served

We consider our reach as a company to be truly Pan-African, scaling across the divides of language and culture to be a truly international service.

500+ Completed Jobs

With a highly specialized and skilled engineering service and systems design team, we have been able to set ourselves apart from the rest.

10,000+ Parts Sold

With an adept logistics team and a global reach in our spare parts department, we truly do bring the world to your doorstep.

100+ Satisfied Customers

We pride ourselves in our work. We always strive to maintain the highest quality standards and ensure that each client has a smile on their face.

Our Coverage



West & Northern Africa Missions

Nigeria, Ghana, Algeria, Bukina Faso, Senegal, Mali, Morocco, Ivory Coast, Guinea, Togo, Sierra Leone.

Central Africa Missions

Cameroon, Congo, Chad, Central African Republic, Gabon, DRC, Congo Brazaville.

Eastern Africa Missions

Kenya, Uganda, Tanzania, Rwanda, Burundi, Somalia, Ethiopia, South Sudan.

Rest of Africa

South Africa, Madagascar, Malawi, Zambia, Zimbabwe, Seychelles, Botswana, Namibia, Angola.



Our Work



Hass Petroleum

Project: *Service level agreement*

Servicing and maintaining of downstream infrastructure and petrol stations across the Region



Proudly part of  AB InBev

Nile Breweries

Project: *Upgrade of NH³ Plant*

To design, installation and commissioning of integrated drive system



SC Johnson

Project: *Machine guarding*

Auditing, procurement, installation, commissioning and maintenance of electrical and mechanical safety components.

Project: *Plant Audit*

Roof structural review

Project: *Project Management & Site Management*

Ikeja, Lagos – Aerosol plant upgrade



Serengeti Breweries

Project: *Spare parts Supply & Plant Maintenance*

Supply and maintenance of spare parts



Seychelles Breweries

Project: *Industrial parts*

Supply and maintenance of industrial parts



Sodicom Sarl

Project: *Mechanical, Electrical & Automation*

Supply and maintenance of mechanical, electrical and automation of equipment.



Brarudi

Project: *Mechanical, Electrical & Automation*

Supply and maintenance of mechanical, electrical and automation of equipment.



Bralima

Project: *Overhaul of Plant equipment*

Supply and maintenance of mechanical, electrical and automation of equipment.



Sierra Leone Breweries

Project: *Mechanical, Electrical & Automation*

Supply and maintenance of mechanical, electrical and automation of equipment.



Kevian

Project: *Mechanical, Electrical & Automation*

Supply and maintenance of mechanical, electrical and automation of equipment.



Pepsi Uganda

Project: *Mechanical, Electrical & Automation*

Supply and maintenance of mechanical, electrical and automation of equipment.



Coca Cola Malawi

Project: *Mechanical, Electrical & Automation*

Supply and maintenance of mechanical, electrical and automation of equipment.



Coca-Cola Beverages Africa – Tanzania

Project: *Plant & Machine Maintenance*

Auditing, procurement of mechanical and electrical spare parts, installation, commissioning and maintenance of electrical and mechanical safety components.

Project: *Coca Cola Kwanza – Mbeya*

Machine: *Labeller*

a. Issue: Delayed or partial label cutting causing delayed gripping by the vacuum gripper.

b. Solution: Fixed roller misalignment to ensure perpendicular rotation and prevent knife wear.

c. Service Results: Increased asset care KPIs and reduced label material wastage.



Project: Coca Cola Kwanza – Dar es Salaam

Machine: *Filler*

Issue: Foaming during filling caused underfilled bottles and downstream downtime.

Solution: Fixed unequal vent tubes, replaced worn discharge star wheel, calibrated CO₂ supply.

Service results: Increased OEE to 95%, reducing downtime and product wastage.

Machine: *Blow Moulder*

Issue: PET bottles had pearlescence, bent clamps, and base plate commissioning issues.

Solution: Adjusted preform temperature and replaced rejection plate to fix bent clamps.

Service results: Produced ISO-standard clear bottles and reduced blow moulder downtime.



Tanzania Breweries Limited

Project: *Plant & Machine Maintenance*

Auditing, procurement of mechanical and electrical spare parts, installation, commissioning and maintenance of electrical and mechanical safety components.

Machine: Empty Bottle Inspection System

Issue: Communication error caused machine stoppage; blurred inspection glass led to false rejections.

Solution: Replaced the blurred protective glass, increasing production output to 97.68%; troubleshooted and fixed the communication error for smooth operation.

Contact Us



Get in Touch With Us

We pride ourselves in our work. We always strive to maintain the highest quality standards and ensure that each client has a smile on their face.

Synkron East Africa
THE Apiary, 4th Floor,
ABC Place, Waiyaki Way
Nairobi, Kenya.

info@synkron-international.com

+254 20 389 3735

Scan QR to
reach us on
Whatsapp
East Africa



Landmark Towers
5B Water Corporation Road
Oniru, Victoria Island
Lagos, Nigeria

info@synkron-international.com

+234 191 25199

Scan QR to
reach us on
Whatsapp
West Africa



Our Partners

We work with world class companies to give our customers the highest quality of products and services. We aim to work together to increase profit margins, optimize production lines, guaranteeing the quality of customers' products and services, and generating repeatable, measurable and reliable processes. Our partnerships have yielded successful outcomes in both large and small projects.

